



Montana Stroke Initiative Nursing Bedside Swallow Screen

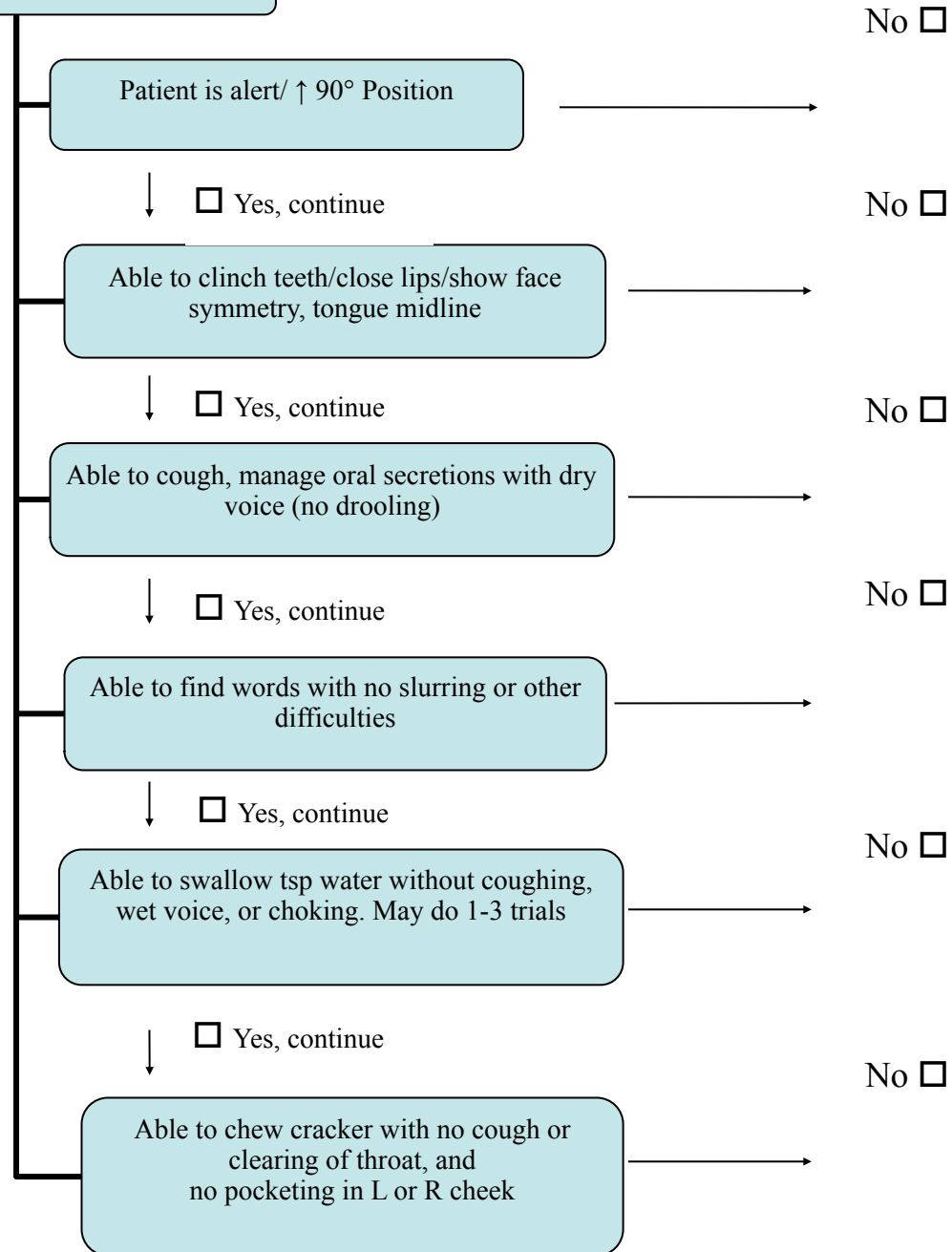
Use this form to document a bedside swallow screen prior to oral intake for all Ischemic Stroke, Hemorrhagic Stroke TIA patients. When complete, place form in physician orders.

Bedside Swallow Screen

A swallow screen is not to be performed on patients who have:

- ↓ LOC
- unable to follow commands
- uncontrolled seizure activity

These patients should remain NPO until a level of safety has been established



If you checked a NO, then keep patient NPO, notify MD and get a ST consult. If the patient passed the swallow screen, then advance diet per physician orders.